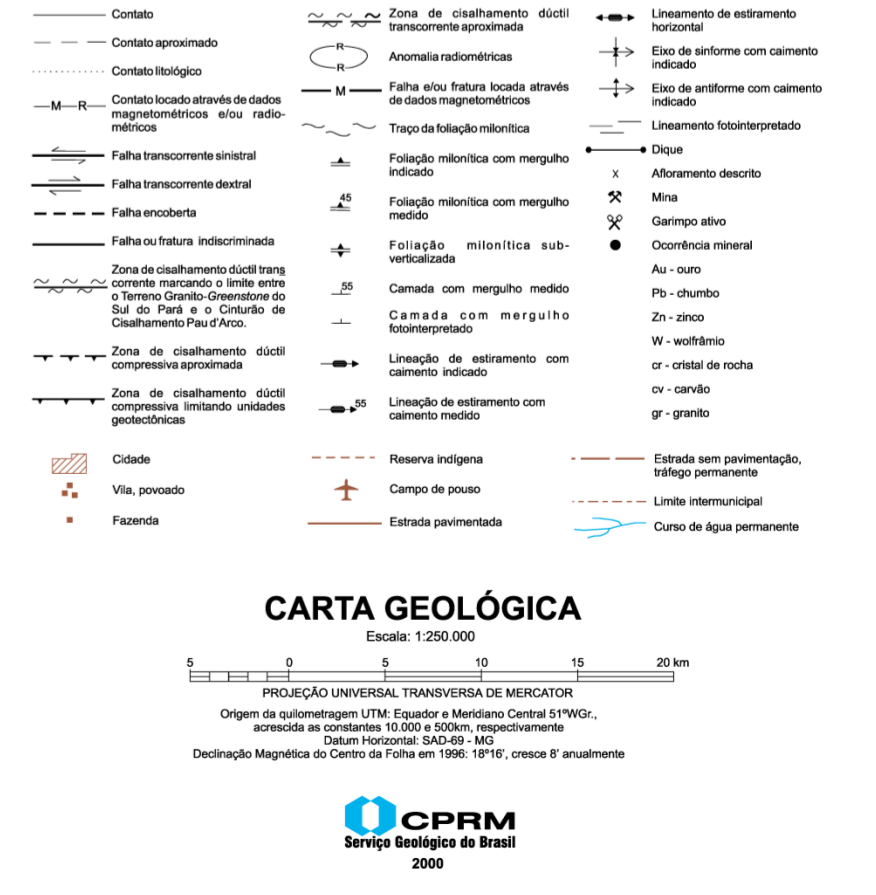
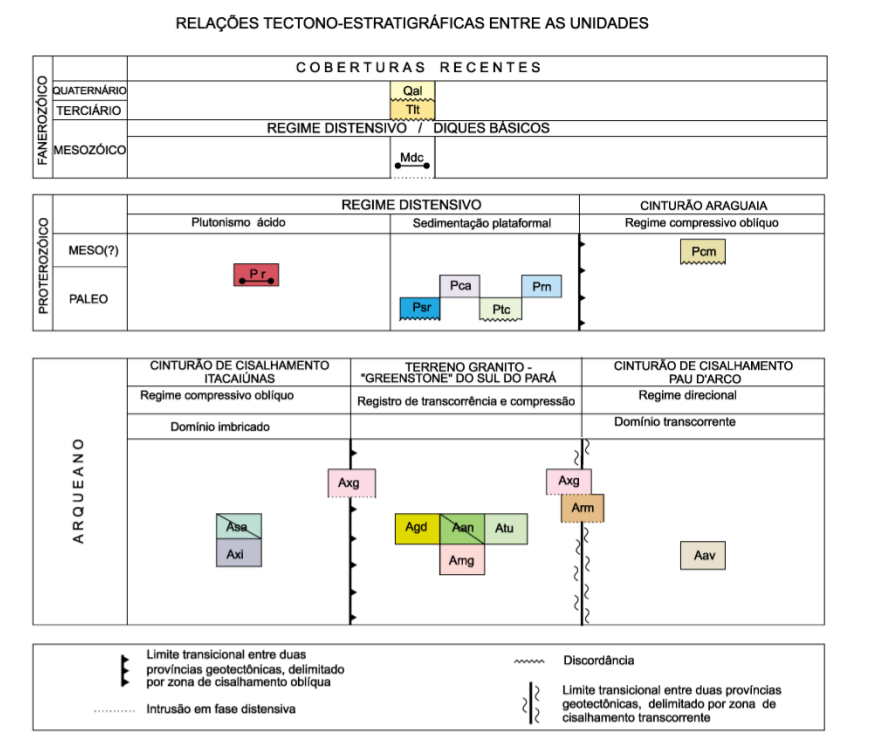
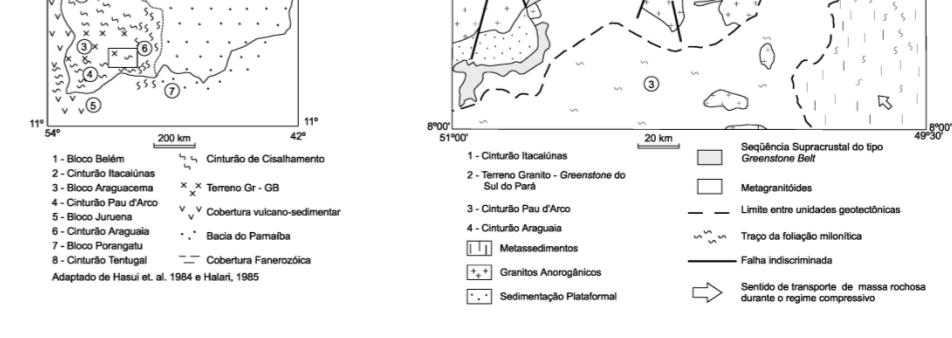
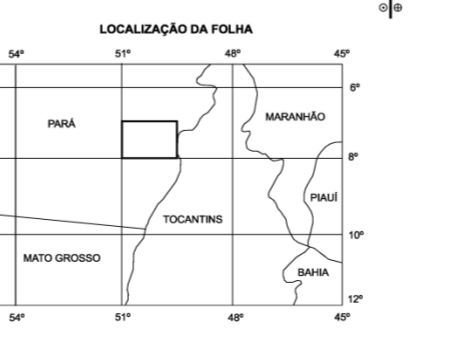
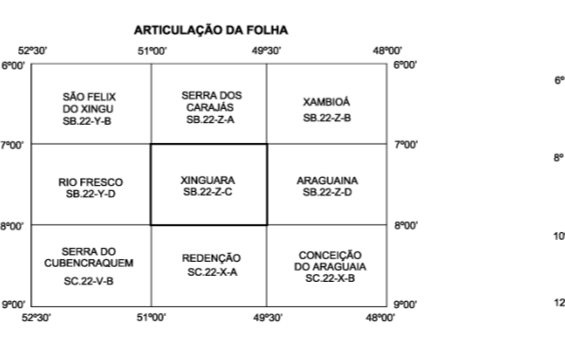
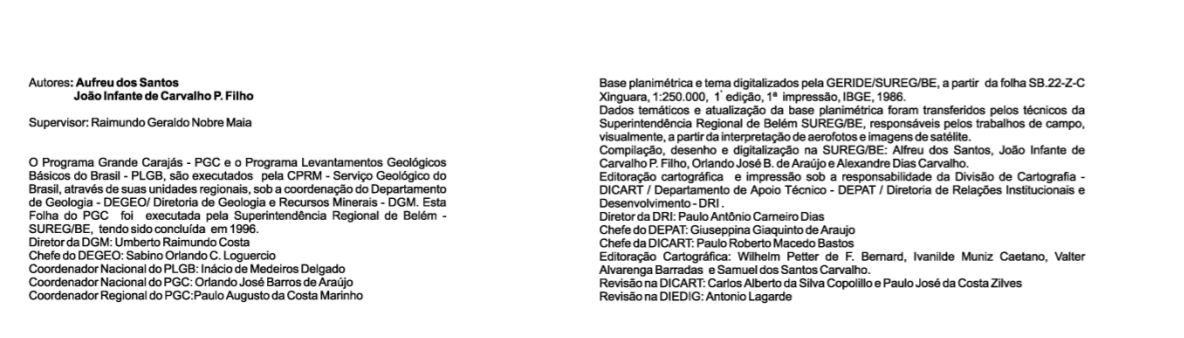
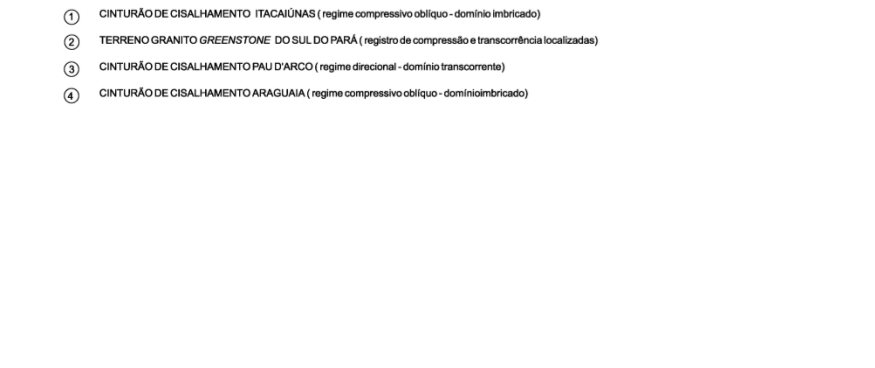
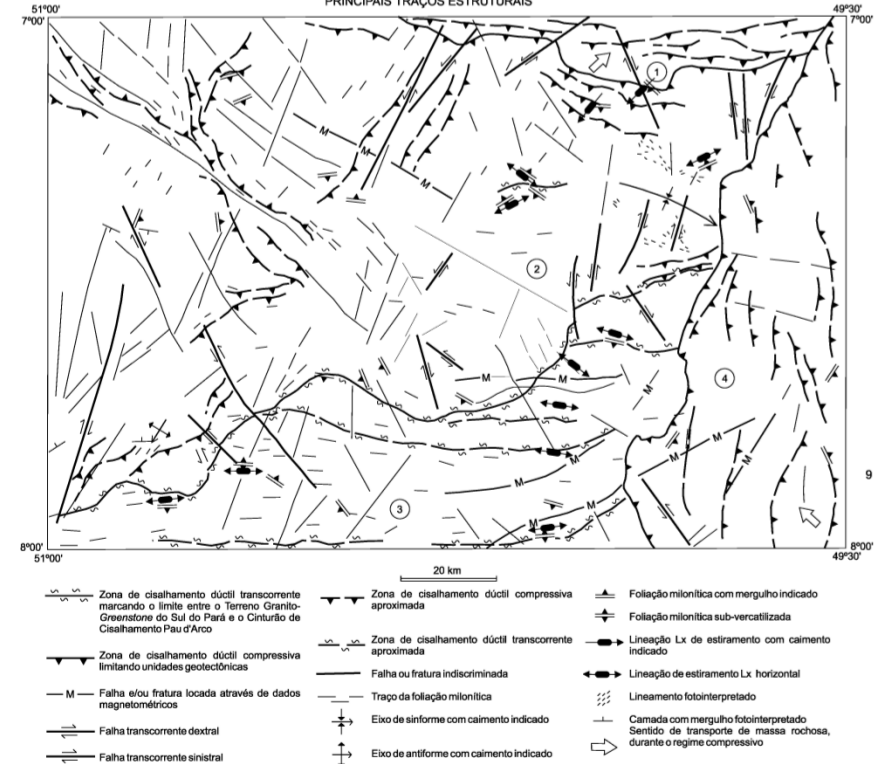
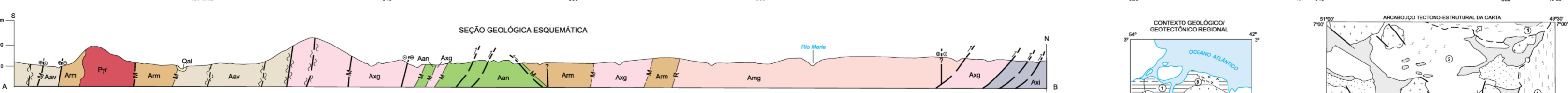
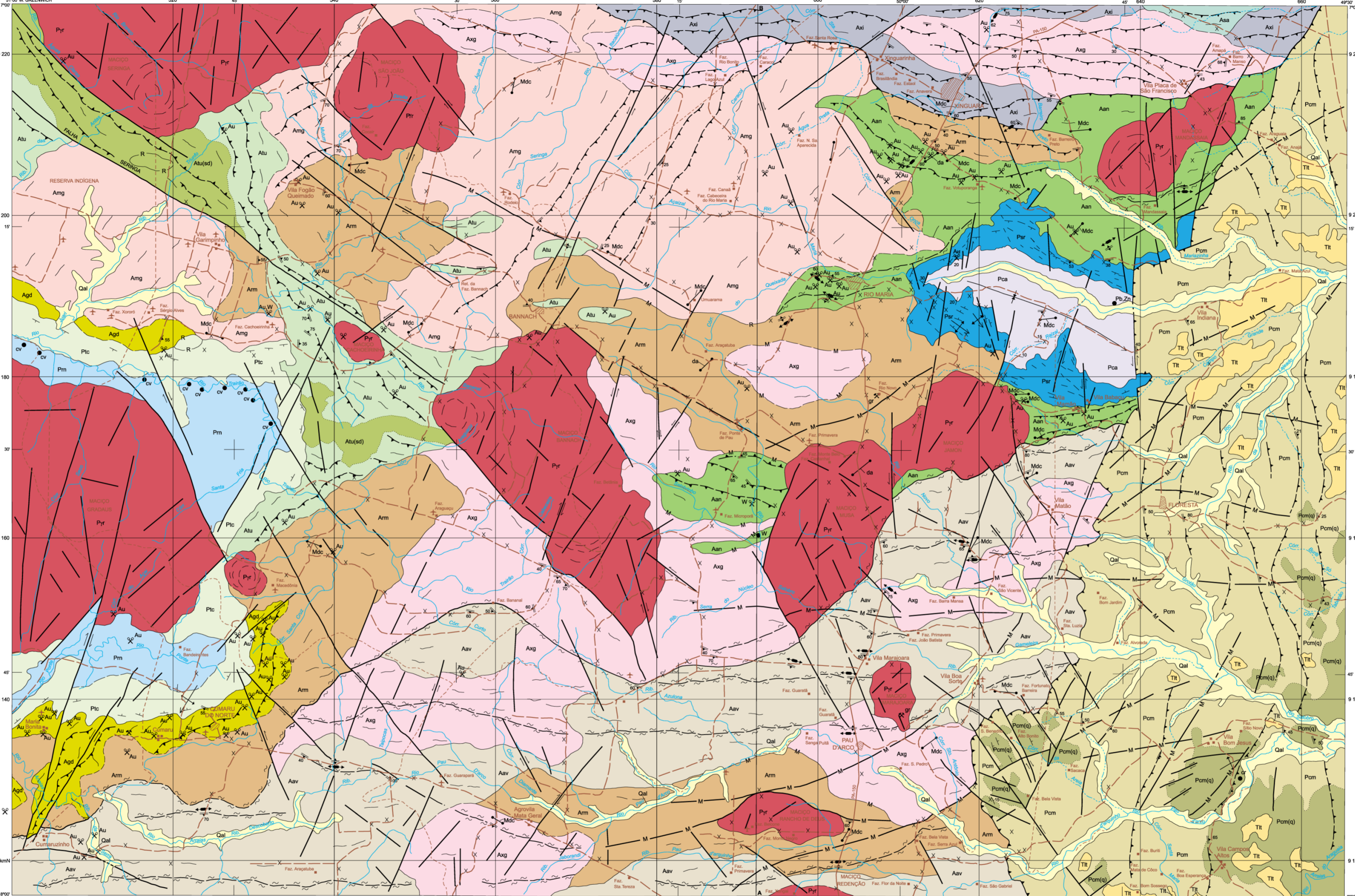
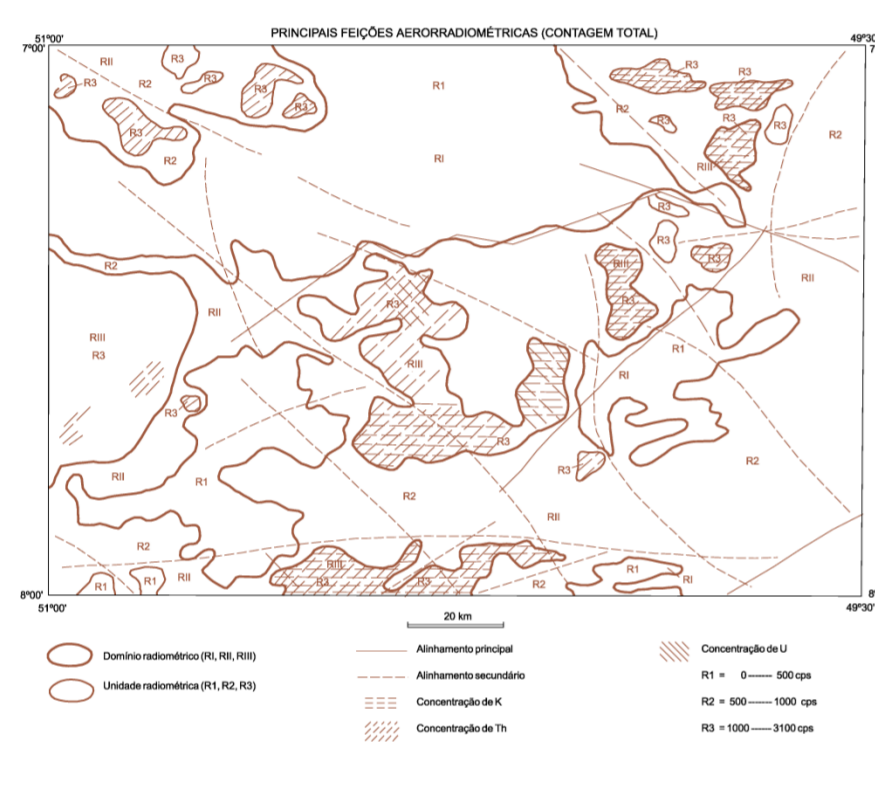
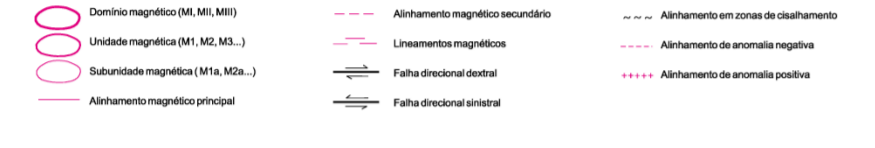
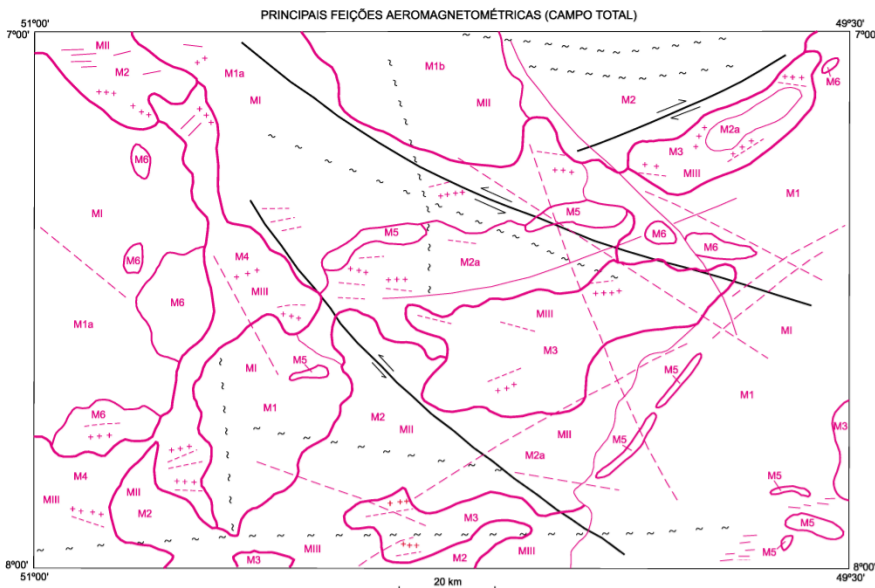


FOLHA SB.22-Z-C XINGUARA



Autores: Aulir dos Santos  
João Infante de Carvalho P. Filho  
Supervisor: Raimundo Geraldo Nobre Maia

Baza planimétrica e tema digitalizados pela GEDE/SUREGORE, a partir da folha SB.22-Z-C Xinguará, 1:250.000, 1ª edição, 1ª impressão, IBGE, 1998.

PROJEÇÃO UNIVERSAL TRANSVERSA DE MERCATOR  
Origem da quilométrica UTM: Equador e Meridiano Central 9°19'W, acréscimo de constantes 10 000 e 500m, respectivamente  
Declinação Magnética do Centro da Folha em 1998: 18°16', cresce 5" anualmente